

Design flooring | wineo 400 for clicking FoldDown



The **wineo 400 for clicking** is a high-quality, resilient design flooring in various formats and designs. For more information, please refer to the technical specifications in our product collections.

Below we would like to inform you about the special requirements for a successful installation of **wineo 400 for clicking**.

Important general information:

Before processing, make sure that the delivered goods are in perfect condition. Goods that have been cut to size or laid are not subject to complaint. Before installation, the goods must be checked for color and batch uniformity. Only install planks/tiles of the same batch in one room.

The relevant national standards, guidelines, and regulations, together with the technical documents and generally acknowledged rules of the trade, apply when installing the **wineo 400 for clicking**.

Substrate condition:

The substrate must be level, load bearing and permanently dry. The maximum height tolerance must not exceed 3mm per linear meter or 1mm per 10cm for tile edges. Textile floor coverings and needle fleece must be removed.

Substrates:

wineo 400 for clicking can be installed floating on all types of screeds, on existing vibration-free wood, planks and chipboard floors, on PVC, plastic coverings and linoleum, on stone, ceramic and marble floors. Textile floor coverings and needlefelt must be removed. Generally, the removal of old floor coverings is recommended to counteract adverse reactions.

Substrates not listed require the approval of Windmüller GmbH.

Notice:

The flooring installer must check the subfloor's readiness for installation before installing the flooring and raise any concerns.

Especially in case of:

- large unevenness
- insufficiently dry subfloor.
- insufficiently firm, too porous, and too rough surface of the subfloor,
- contaminated surface of the substrate, e.g., by oil, wax, varnish, paint residues,
- incorrect height of the surface of the substrate in relation to the height of adjacent components,
- unsuitable temperature of the substrate,
- unsuitable room climate,
- missing heating protocol in case of heated floor constructions,
- missing protrusion of the edge insulation strip,
- missing marking of measuring points in case of heated floor constructions,
- missing joint plan.

When installing **wineo 400 for clicking** on underfloor heating systems, EN 1264-2 (underfloor heating systems and components) must be considered. The surface temperature should not exceed 27°C on a permanent basis. If other underfloor heating systems are used, please consult the application engineering department of Windmüller GmbH. To prevent rot damage to wood-based subfloor constructions (e.g. wooden beam ceilings), ensure or guarantee sufficient rear ventilation of the construction.

Design flooring | wineo 400 for clicking FoldDown

wineo

THAT'S FLOORING

Tools for laying (1):

- Laying knife with trapezoidal blade
- Folding ruler / tape measure
- White rubber mallet
- Spacer
- Pencil / scribe
- Angle / square



Acclimatization (2):

wineo 400 for clicking as well as all required auxiliary materials must be acclimatized at least 24 hours before installation in small stacks (max.3) in the rooms to be installed or adjacent rooms under the following conditions!

Room climatic conditions:

- Room air temperature > 18°C (but not more than 26°C).
- Floor temperature > 15°C (but not more than 22°C)
- Relative humidity < 65%



Use of the silentCOMFORT underlay mat (3)

We recommend the use of the **silentCOMFORT** underlay mat.

This underlay mat offers you the following advantages:

- Bridging of minor unevenness of the subfloor
- Reduction of footfall and walking noise
- Optimal support of the locking systems due to high pressure stabilization and very good recovery properties
- Minimization of footfall noise due to possible residual dirt on the subfloor
- Increase of the walking comfort
- Improvement of the laying properties
- Protection against interactions with existing substrates



We recommend the use of **silentCOMFORT** when laying on:

- Parquet, prefabricated wood, screeds and other wood materials
- Flat stone floors, ceramic tiles, marble, fine stoneware (joint requirement: <5mm width / <2mm depth and height offset from tile to tile max. 1mm)
- PVC coverings
- Old and new screeds

Substrates not listed require approval by Windmüller GmbH. Basically, the removal of old floor coverings is recommended to counteract adverse reactions. The use of unsuitable underlays may lead to exclusion of warranty in case of damage.

Design flooring | wineo 400 for clicking FoldDown

wineo

THAT'S FLOORING

The installation of wineo 400 for clicking

Movement joint / edge distances:

Movement joint: at least 5mm wide.

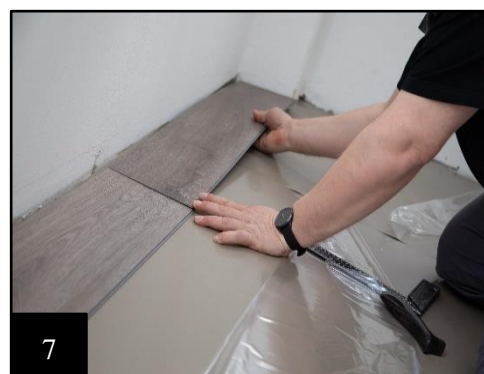
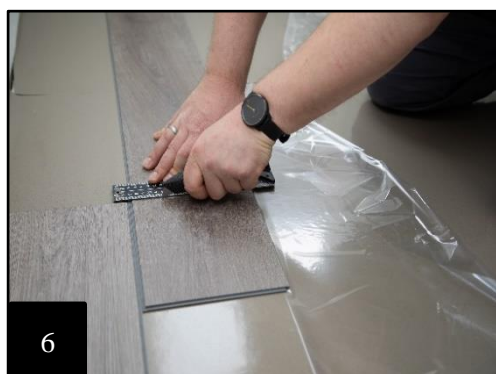
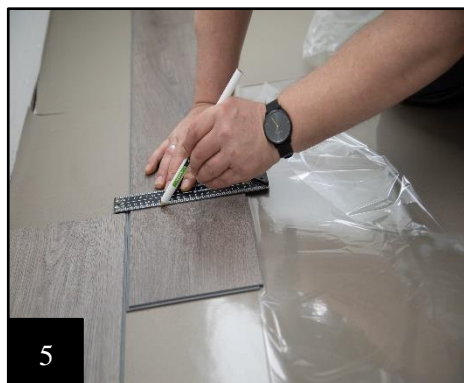
Tip: Use leftover pieces of the floor covering as spacers. Also observe a distance of 5mm to all fixed objects in the room, such as pipe ducts, door frames, etc.! This movement joint must not be filled with silicone, electric cables or similar!

Laying:

Lay the panels with the face towards the main light source of the room. You can significantly improve the inherent stability of the installed floor by laying long, narrow rooms lengthwise.

Always work from left to right in the laying area (4). In doing so, the tongue sides of the panels face the wall. Make sure that the tongue and groove head joints fit exactly over each other and lock them with a light tap using a white rubber mallet.

Now mark (5) the element to be inserted at the end of the room and cut (6) it to fit exactly so that the edge distance of at least 5mm is ensured.



Design flooring | wineo 400 for clicking FoldDown

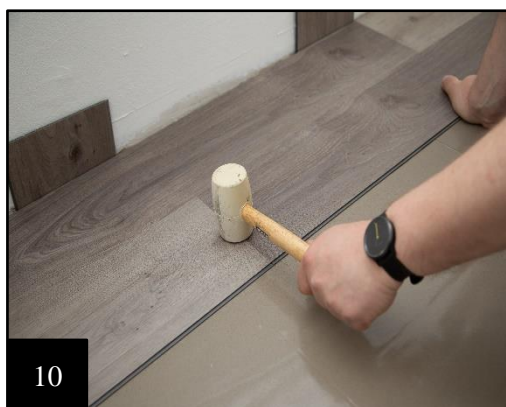
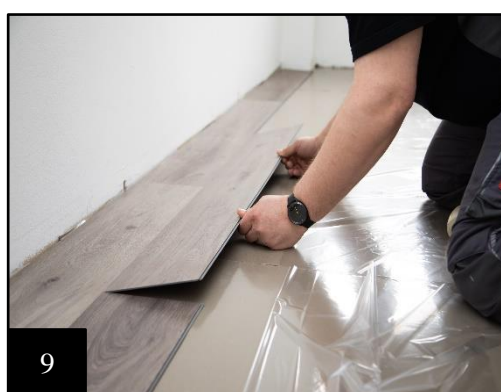
wineo

THAT'S FLOORING

To lay the subsequent rows, place the remaining panel of the first row, at least 30cm long, in the longitudinal groove of the row already laid flat at an angle of approx. 30° and lower it against the front row with slight pressure (8). Take the following panel, guide it lengthwise at an angle of also 30° into the panel of the first row already laid flat on the floor, guiding it as close as possible to the head side of the previously laid panel (9) and lock it as described above (10).

This technique is used to lay all the remaining rows.

To lay the last row, measure the distance between the wall and the laid row and transfer it to the panel. The last laying row should correspond to half a panel width if possible. Remember about the 5mm wide movement joint.



Movement profiles in the area:

Rooms with an uninterrupted area of 150m² can be laid without joints, taking into account double the edge distance (approx. 10mm). A side length of approx. 12,50 m should not be exceeded. Suitable movement profiles should be used for very narrow, long rooms. Room areas that are interrupted by rising building components (pillars, partition walls, doorways, etc.) should be separated by placing movement joints (at least 10mm, depending on the size of the area) at the height of the building components. When installing skirting boards, transition or end profiles, it must be taken into account that the skirting boards or profiles must never be fastened to the floor covering!

Design flooring | wineo 400 for clicking FoldDown



Important notes on the completion of the installation

- Remove all spacers
- The **wineo 400 for clicking** must not be fixed on site at any time. Neither must the flooring be fixed to the subfloor, to furniture or other fixed installation parts.

Special features and exceptional situations

- In conservatories or similar rooms with large-scale overhead glazing, the use of **wineo 400 for clicking** should be regarded as critical due to extreme fluctuations in the room climate and requires separate coordination and approval by Windmüller GmbH.
- When using permanently elastic sealants, we recommend first applying a joint sealing foam cord (see Accessories Part No. 20080300) to the joint areas and then filling them with silicone compound to create a two-sided bond. Permanently elastic sealed joints are to be regarded as maintenance joints and must be regularly checked for functional capability and renewed if necessary.
- In order to prevent material changes/damage, sufficient shading must be provided and an edge distance of 10mm (if necessary, use end profile PS400PEP) must be maintained when laying in areas with strong sunlight.
- Our wineo design flooring meets the highest quality requirements in many respects. This also applies to the light fastness according to EN 105- B02. However, a standard test can never simulate the intensity of natural UV light, so partial color changes or fading may occur in areas with intense UV light incidence and without sufficient shading.
- A sufficiently dimensioned "radiation barrier" (e.g. glass or metal base plates) must be provided at fireplaces and tiled stoves. The size varies depending on the heating capacity of the fireplace or tiled stove. Please observe the specifications of your stove builder / chimney sweep here.
- The **wineo 400 for clicking** must be decoupled from all permanently installed furniture or furnishings such as kitchen units, stoves, etc.
- In the case of furnishings with high static pressure loads, sufficient load distribution (e.g. load distribution plates) must be provided in accordance with the weight.

Cleaning and care:

Please refer to our detailed cleaning and cleaning agent recommendations at www.wineo.de!

With the publication of these installation instructions (as of 07/2021), all previous versions lose their validity.